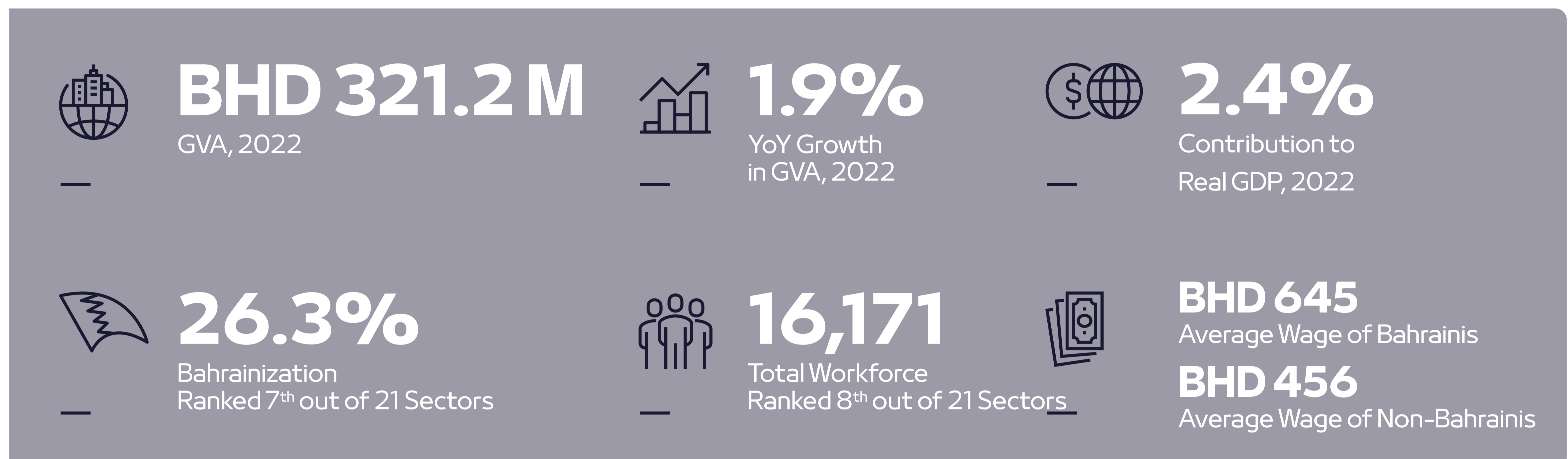


Last Updated: April 2023

Bahrain is home to some of the oldest private educational establishments in the region, reflecting its pioneering role in developing formal education. The private education sector in Bahrain creates job opportunities for Bahrainis and is critical in generating a supply of skilled graduates.



Sector Opportunities & Trends

01. Integrated learning

Integrated learning creates opportunities for impactful and effective education by extending learning beyond the walls of a lecture room. Integrated learning includes work-based projects, internships, clinical placements, work simulations and mentoring programs that enhance skillsets and improve overall employability.

02. Learning analytics

There is an increased focus on data-informed decision making. We have seen a renewed focus on different forms of data that are critical to enhance education outcomes, such as real-time performance data, which allow teachers and other decision makers to course-adjust to the needs of learners to better support their educational journeys.

03. Special education

It is vital that educational provision keeps pace with the growing population of children with special educational needs. At the same time, Bahrain must also invest in opening schools that mainly aim to cater to gifted children. On the talent side, there is a shortage of teachers in special education in all licensure areas.

04. Online and education technology (EdTech)

Adapting to market changes is a key opportunity for the education sector. EdTech is an alternative teaching method that can complement in-person teaching. For example, AI-powered bots can assist teaching staff in lesson development, assessment and assignment marking, freeing up teachers' time. In addition, there are platforms such as live lectures or recorded versions that students can access.

05. Blended learning

Schools are mixing traditional education with a more flexible, tech-based approach that has resulted in increased student engagement and comprehension. Hybrid learning models will continue to be adapted where some students will learn in person and others will join classrooms virtually. If done properly, distance hybrid learning will allow students to self-pace their learning and monitor progress.

06. Social and emotional learning

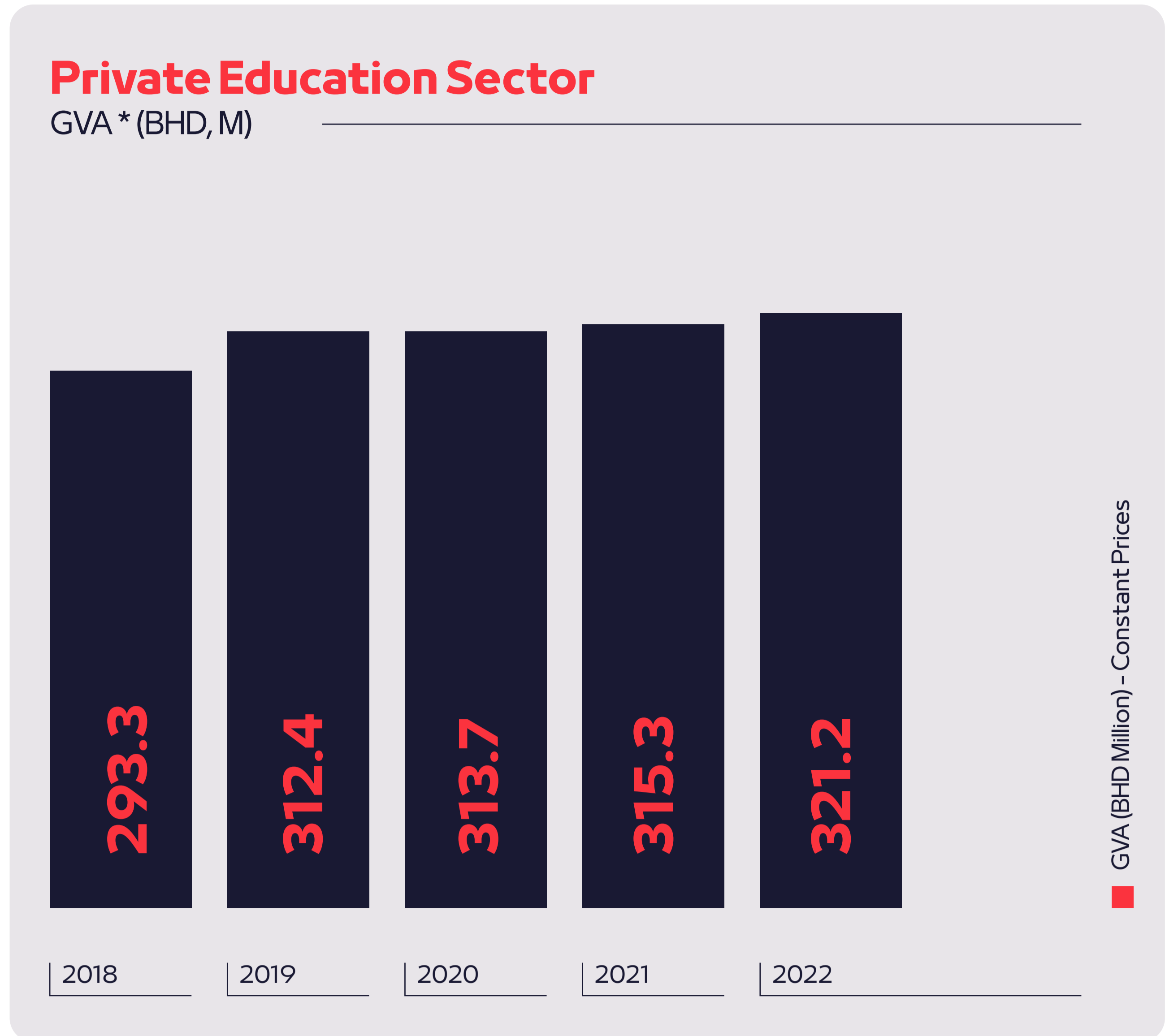
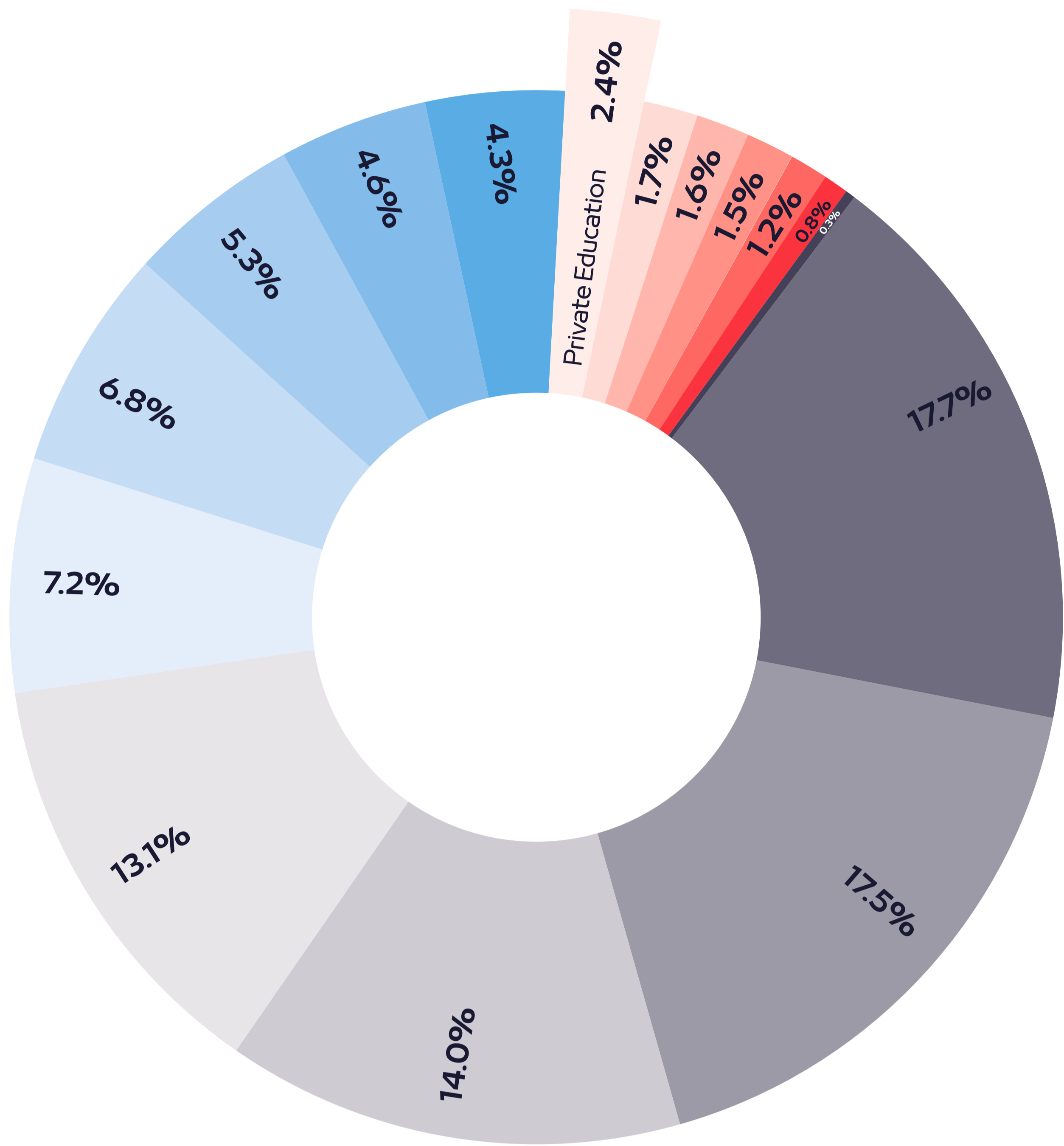
The wellbeing of students is one of the top priorities for schools especially after the pandemic. Many schools are not only focusing on gaining access to social workers or counsellors, but psychologists as well. Where students' mental health have been affected during Covid-19, social and emotional learning proves critical. Developing soft skills such as communication, listening, problem solving and self-awareness is important to manage stress and anxiety, making it necessary to incorporate them into the curriculum.

Private Education Sector Economic Indicators

iGA-National Accounts, Q4-2022

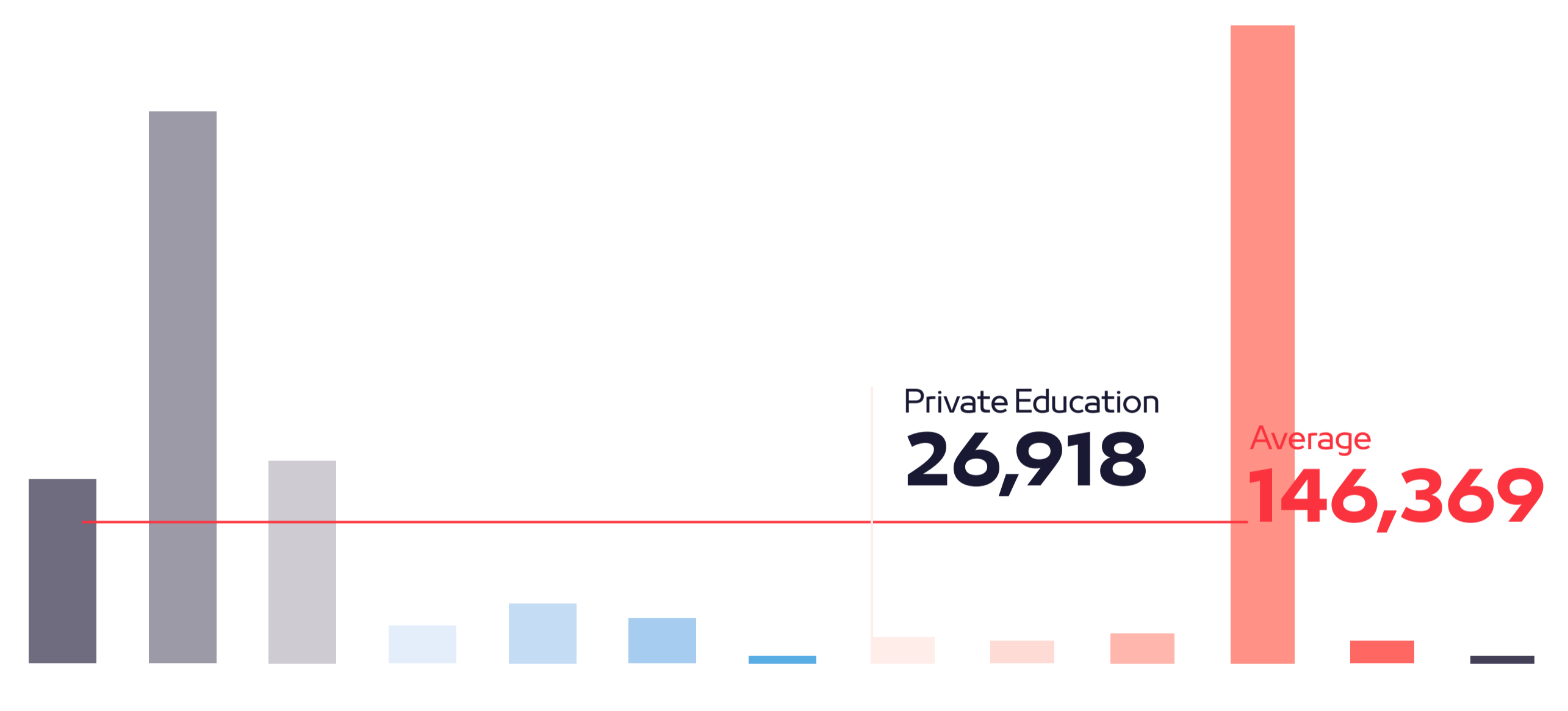
Private Education Sector Contribution to Real GDP

(%, Q4 2022)



GVA per company

(BHD, Q4 2022)



Mining & Quarrying	17.7%	Trade	4.3%
Financial Corporations	17.5%	Private Education Services	2.4%
Manufacturing	14.0%	Hotels & Restaurants	1.7%
Government Services	13.1%	Other Social & Personal Services	1.6%
Construction	7.2%	Electricity & Water	1.5%
Transport and Communication	6.8%	Private Health Services	1.2%
Real Estate & Business Activities	5.3%	Others**	0.8%
Net tax on Products	4.6%	Agriculture & Fishing	0.3%

*Gross Value added (GVA) measures the value of goods and services produced in an area, industry or sector of an economy
 **Others includes (Private Non-Profit Institutions, Households with Employed Persons)

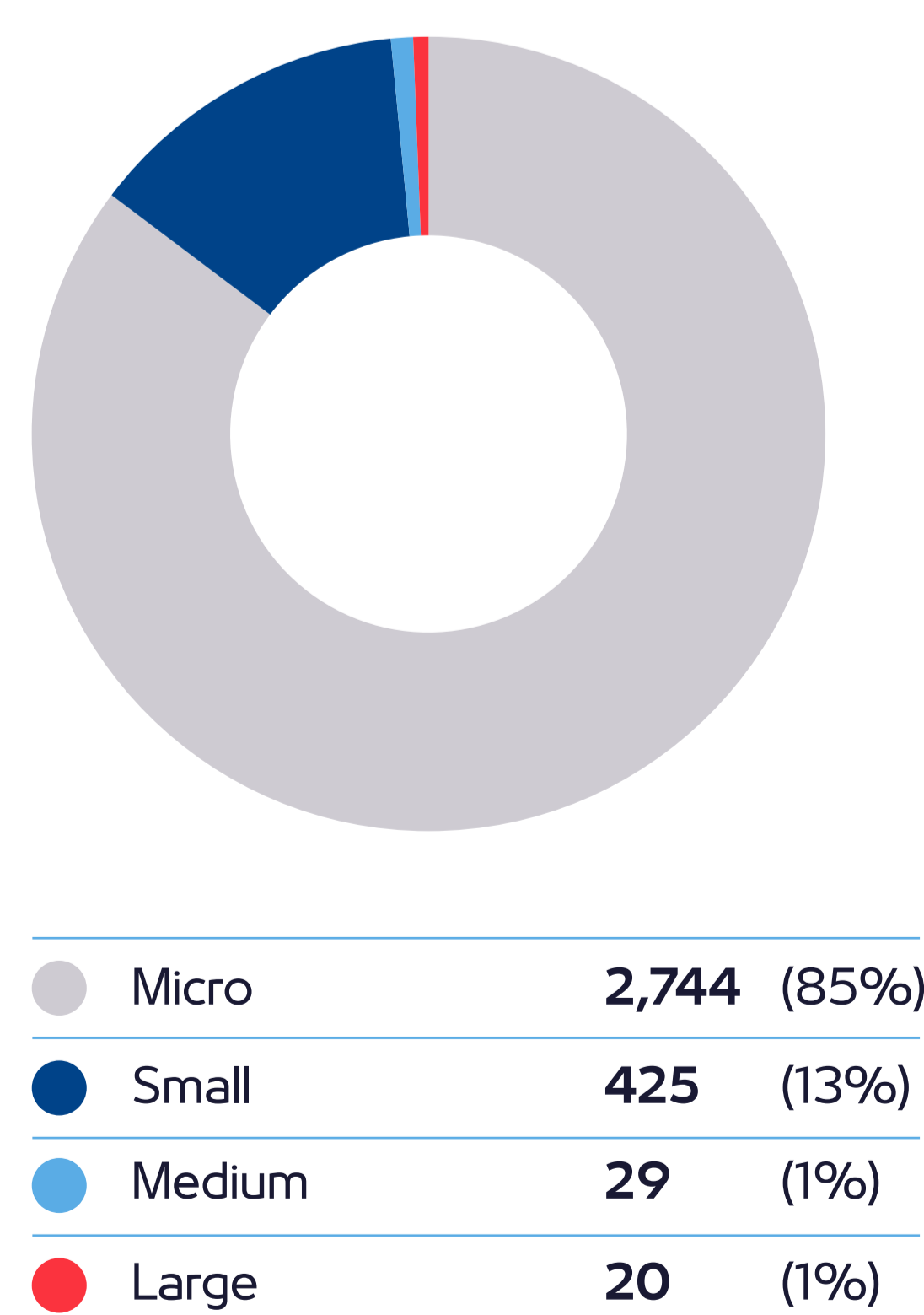
Private Education Sector Enterprises

LMRA, 2022 - BLMI

3,218
Active CRs

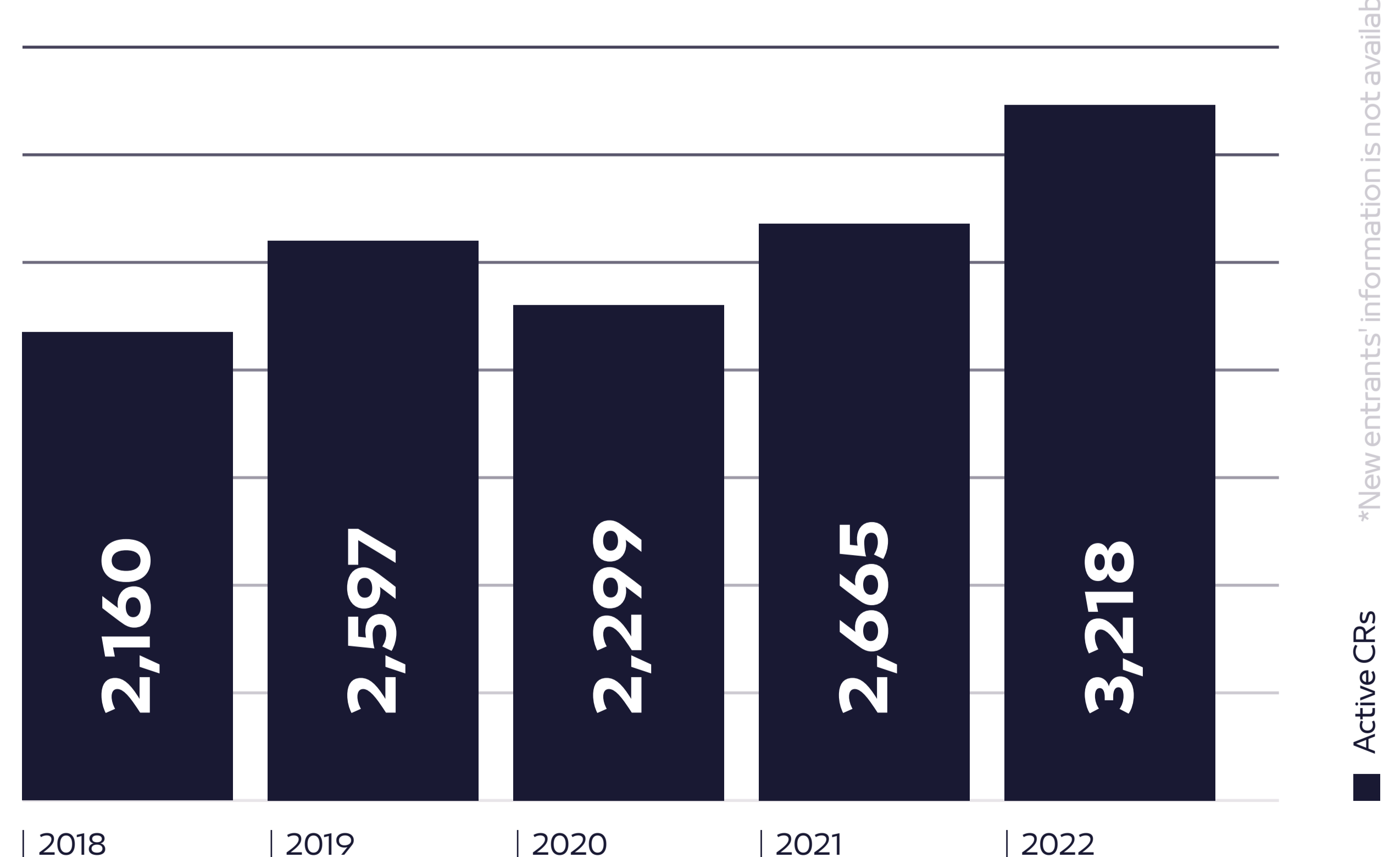
4.5%
of total Active CRs in Bahrain

Private Education Sector by Enterprise Size (%), Q4 2022



Private Education Sector

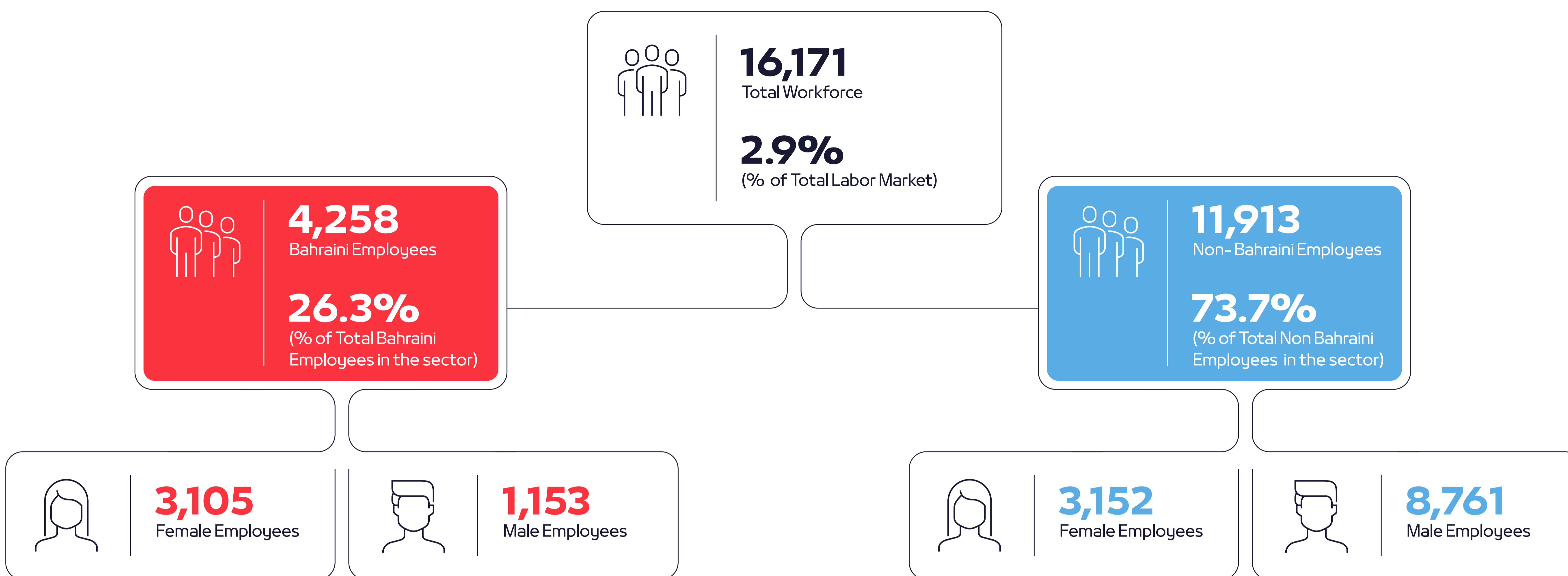
Active Commercial Registrations (2018 - 2022)



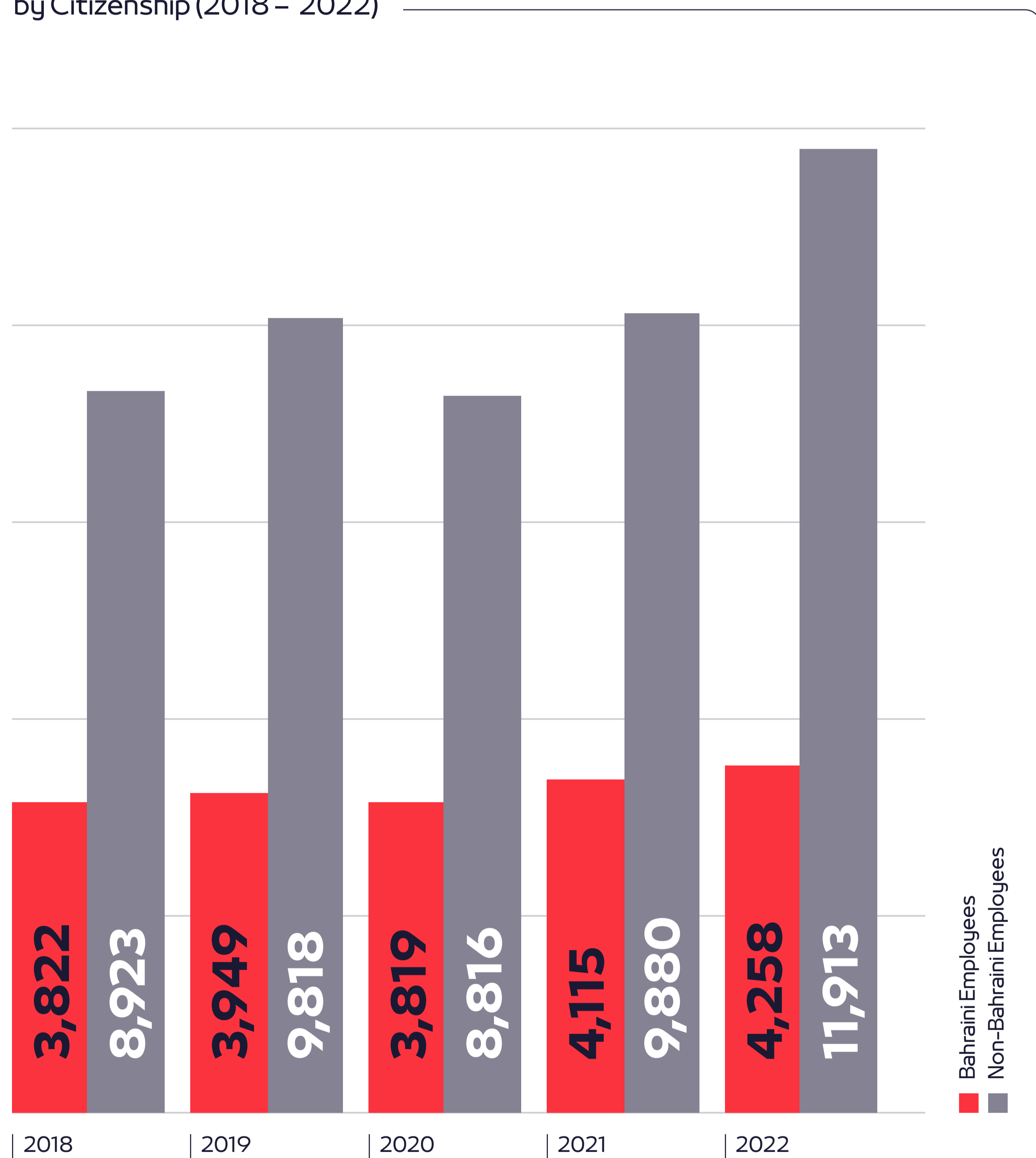
As per ISIC4 classification, the sector includes pre-primary and primary education, secondary and general secondary education, technical and vocational secondary education, higher education, sports and recreation education, other education.

Private Education Sector Employment

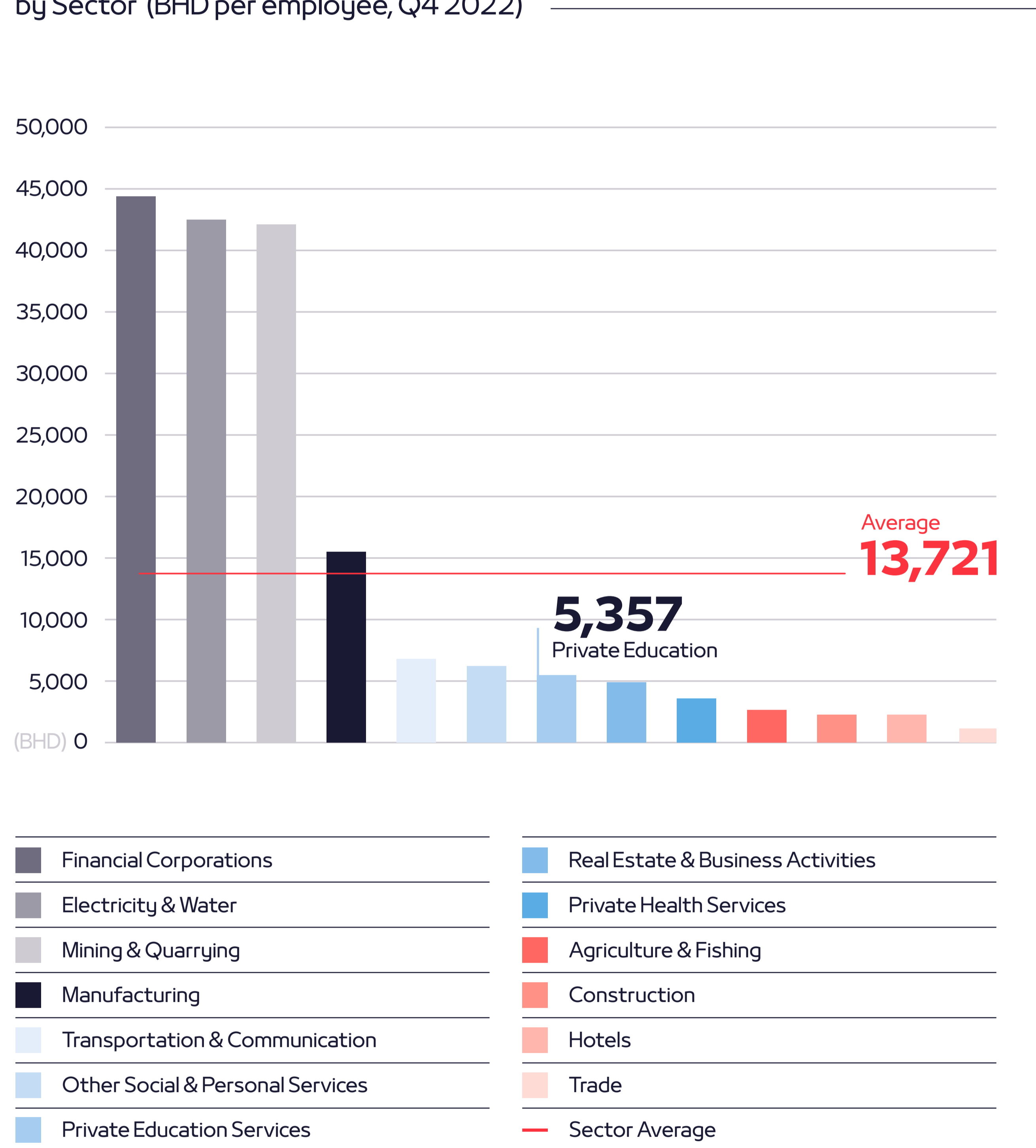
LMRA, Q4 2022- BLMI / iGA-National Accounts



Private Education Sector Employees by Citizenship (2018 - 2022)



Private Education Productivity by Sector (BHD per employee, Q4 2022)



Important notice

The information presented in this report has been prepared by Tamkeen using sources believed to be reliable and accurate. Tamkeen makes no representation or warranty of any kind, express or implied, regarding the accuracy, adequacy, validity, reliability, availability or completeness of any information or data in this report.